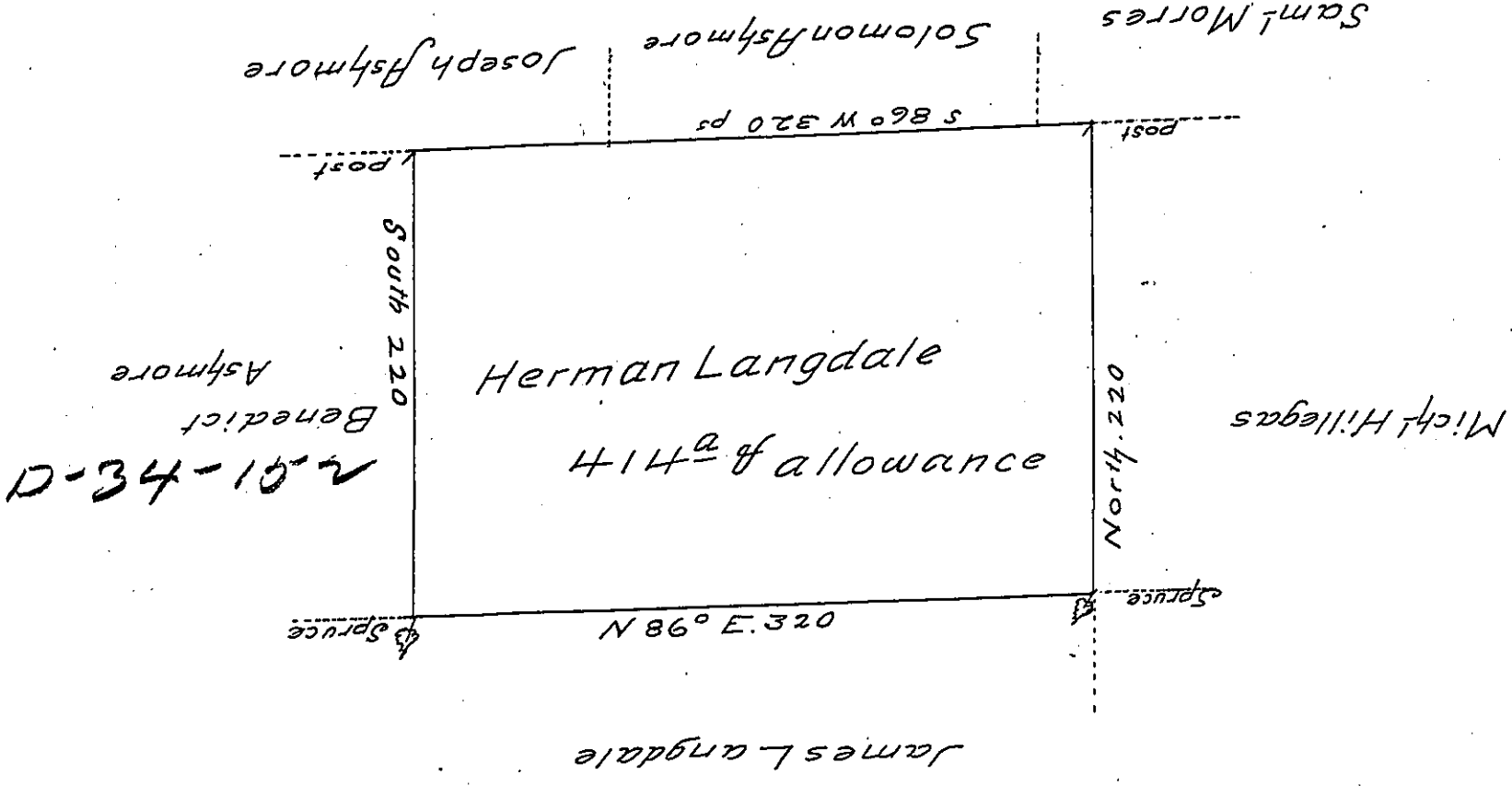


C-3-195



A Draught of a Tract of Land Called — Situate adjoining
 land of Benedict Ashmore and others in Stoke Township North-
 umberland County. Survey'd on the 24th day of April 1785 for
 Herman Lang (obit) by virtue of his Warrant dated the 4th day
 of April 1785 Contain (obit) four hundred and fourteen acres
 and allowance of Six p Cent for Pro (obit)

by Wm Gray D.S.

To John Lukens Esq^t
 Surveyor Gen^l

IN TESTIMONY that the above is a copy of the original remaining on file in
 the Department of Internal Affairs of Pennsylvania, made
 conformably to an Act of Assembly approved the 16th day of
 February, 1833, I have hereunto set my Hand and caused
 the Seal of said Department to be affixed at Harrisburg,
 this seventeenth day of October 1905

Geo A P. Brown
 Secretary of Internal Affairs.